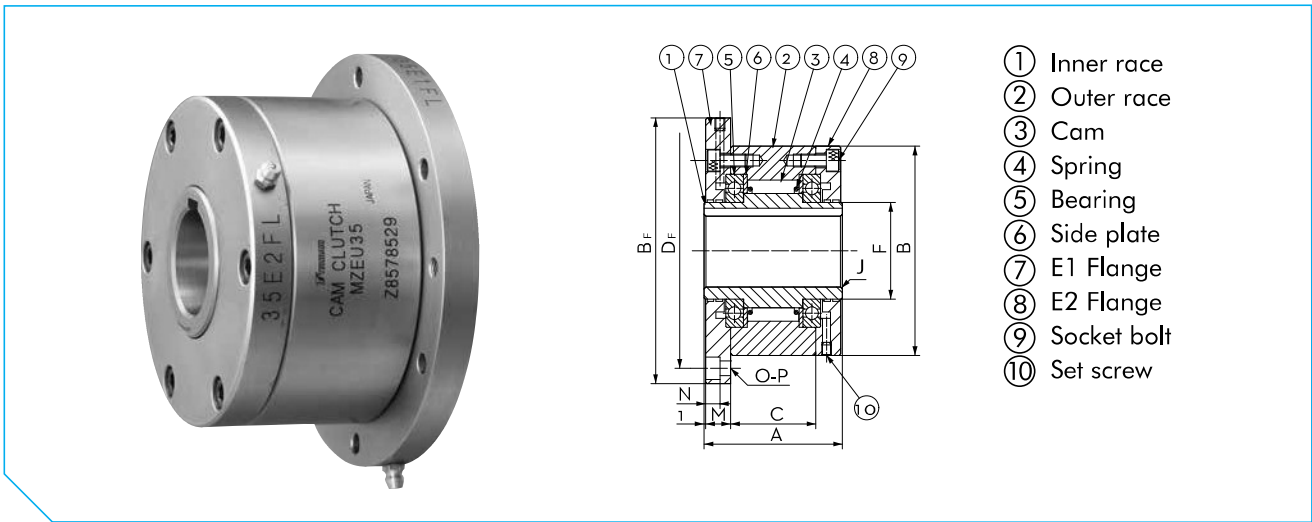


MZEU-K SERIES CAM CLUTCH



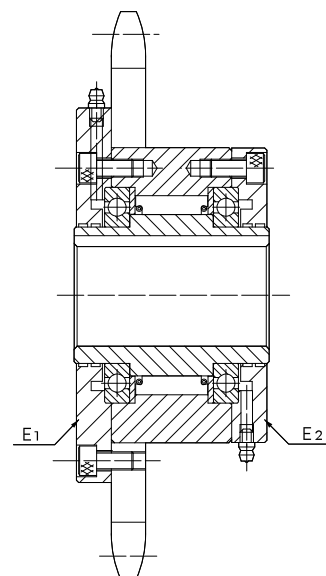
E1 Flange + E2 Flange

Dimensions in mm

Model	Bore Size H7	Inner Race Keyway	A	B h7	B _F	C	D _F	F	J	M	N	O-P	Approx. Mass
													kg/pc
MZEU12-K E1+E2	12	4 x 1.8	42	62	85	20	72	20	0.8	10.0	5.7	3-ø5.5	1.1
MZEU15-K E1+E2	15	5 x 2.3	52	68	92	28	78	25	0.8	11.0	5.7	3-ø5.5	1.5
MZEU20-K E1+E2	20	6 x 2.8	57	75	98	34	85	30	0.8	10.5	5.7	4-ø5.5	1.9
MZEU25-K E1+E2	25	8 x 3.3	60	90	118	35	104	40	0.8	11.5	6.8	4-ø6.6	2.9
MZEU30-K E1+E2	30	8 x 3.3	68	100	128	43	114	45	1.0	11.5	6.8	6-ø6.6	4.0
MZEU35-K E1+E2	35	10 x 3.3	74	110	140	45	124	50	1.0	13.5	6.8	6-ø6.6	5.2
MZEU40-K E1+E2	40	12 x 3.3	86	125	160	53	142	55	1.3	15.5	9.0	6-ø9.0	7.9
MZEU45-K E1+E2	45	14 x 3.8	86	130	165	53	146	60	1.3	15.5	9.0	8-ø9.0	9.3
MZEU50-K E1+E2	50	14 x 3.8	94	150	185	64	166	70	1.3	14.0	9.0	8-ø9.0	11.7
MZEU55-K E1+E2	55	16 x 4.3	104	160	204	66	182	75	1.5	18.0	11.0	8-ø11.0	15.3
MZEU60-K E1+E2	60	18 x 4.4	114	170	214	78	192	80	1.5	17.0	11.0	10-ø11.0	17.7
MZEU70-K E1+E2	70	20 x 4.9	134	190	234	95	212	90	1.8	18.5	11.0	10-ø11.0	25.5
MZEU80-K E1+E2	80	22 x 5.4	144	210	254	100	232	105	1.8	21.0	11.0	10-ø11.0	33.2
MZEU90-K E1+E2	90	25 x 5.4	158	230	278	115	254	120	2.0	20.5	13.0	10-ø14.0	38.3
MZEU100-K E1+E2	100	28 x 6.4	182	270	335	120	305	140	2.0	30.0	17.5	10-ø18.0	68.8
MZEU130-K E1+E2	130	32 x 7.4	212	310	380	152	345	160	2.5	29.0	17.5	12-ø18.0	98.2
MZEU150-K E1+E2	150	36 x 8.4	246	400	485	180	445	200	2.5	32.0	21.5	12-ø22.0	198.2

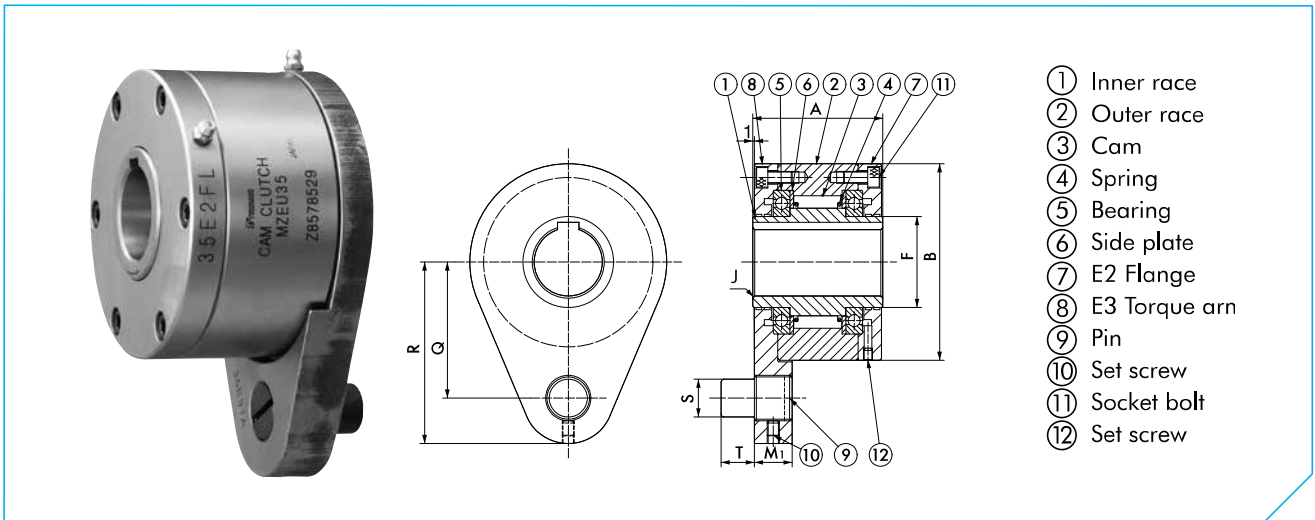
Installation and Usage

- The Cam Clutch is delivered as a combination of a basic type clutch, an E1 flange and an E2 flange, each one packed and supplied as an individual part set.
Each flange set comes with a complete flange kit, containing a number of bolts, a grease nipple, a locker set screw and a seal plug.
- Check the direction of rotation before assembling, then mount both flanges making use of the flange kits.
- Before mounting the sizes MZEU90-K to MZEU150-K apply the sealing adhesive, which comes along with the part sets, between body (outer race surface) and the optional part, to prevent leakage of oil during operation.
- When installing sprocket, gear, pulley or other items to the clutch, always use bolts to assemble them. Size and quantity are mentioned under H-L, page 17. Lengths and shape are determined by the thickness of the fitted part.
- When installing any type of optional or fitted part in the opposite way the direction of the clutch's rotation can be changed.
- For high speed indexing applications (over 50 cycle/min) strong springs are recommended and can be supplied accordingly.



Installation example 2

MZEU-K SERIES CAM CLUTCH



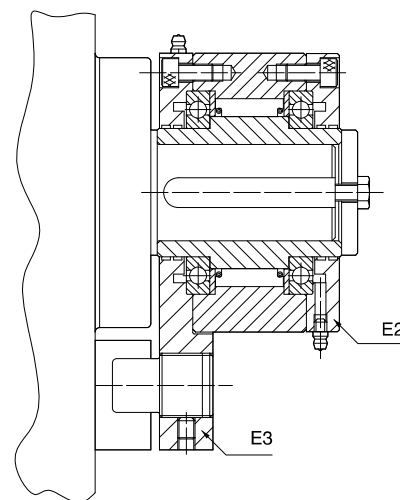
E2 Flange + E3 Torque Arm

Dimensions in mm

Model	Bore Size H7	Inner Race Keyway	A	B h7	F	J	M ₁	Q	R	S	T	Approx. Mass
												kg/pc
MZEU12-K E2+E3	12	4 x 1.8	42	62	20	0.8	13.5	44	59	10	10	1.0
MZEU15-K E2+E3	15	5 x 2.3	52	68	25	0.8	13.5	47	62	10	10	1.4
MZEU20-K E2+E3	20	6 x 2.8	57	75	30	0.8	15.0	54	72	12	11	1.8
MZEU25-K E2+E3	25	8 x 3.3	60	90	40	0.8	19.0	62	84	16	14	2.7
MZEU30-K E2+E3	30	8 x 3.3	68	100	45	1.0	19.0	68	92	16	14	4.1
MZEU35-K E2+E3	35	10 x 3.3	74	110	50	1.0	22.0	76	102	20	18	5.1
MZEU40-K E2+E3	40	12 x 3.3	86	125	55	1.3	22.0	85	112	20	18	7.4
MZEU45-K E2+E3	45	14 x 3.8	86	130	60	1.3	25.0	90	120	25	22	9.1
MZEU50-K E2+E3	50	14 x 3.8	94	150	70	1.3	25.0	102	135	25	22	11.6
MZEU55-K E2+E3	55	16 x 4.3	104	160	75	1.5	30.0	108	142	32	25	14.6
MZEU60-K E2+E3	60	18 x 4.4	114	170	80	1.5	30.0	112	145	32	25	17.0
MZEU70-K E2+E3	70	20 x 4.9	134	190	90	1.8	35.0	135	175	38	30	25.4
MZEU80-K E2+E3	80	22 x 5.4	144	210	105	1.8	35.0	145	185	38	30	32.6
MZEU90-K E2+E3	90	25 x 5.4	158	230	120	2.0	45.0	155	205	50	40	38.9
MZEU100-K E2+E3	100	28 x 6.4	182	270	140	2.0	45.0	180	230	50	40	65.2
MZEU130-K E2+E3	130	32 x 7.4	212	310	160	2.5	60.0	205	268	68	55	97.3
MZEU150-K E2+E3	150	36 x 8.4	246	400	200	2.5	60.0	255	325	68	55	191.4

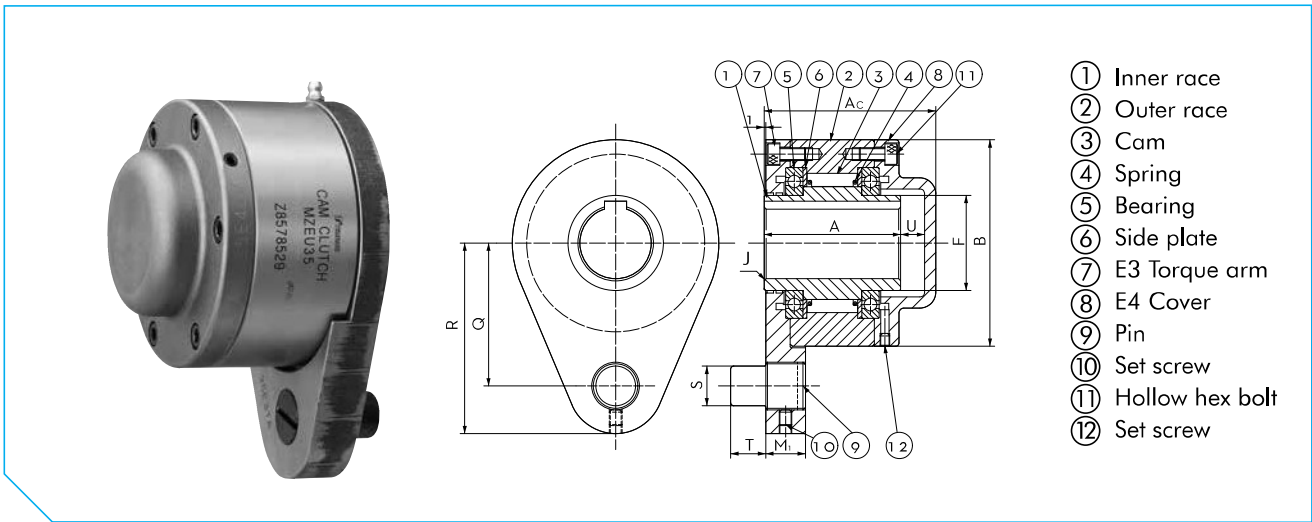
Installation and Usage

1. The Cam Clutch is delivered as a combination of a basic type clutch, an E3 torque arm and an E2 flange, each one packed and supplied as an individual part set. The flange set comes with a complete mounting kit, containing a number of bolts, a grease nipple, a locker set screw and a seal plug. The torque arm comes with an extra pin and set screw.
2. Check the direction of rotation before assembling, then mount both optional parts making use of the flange kits.
3. Before mounting the sizes MZEU90-K to MZEU150-K apply the sealing adhesive, included with the part sets, between body (outer race surface) and the optional part, to prevent leakage of oil during operation.
4. When installing the optional parts in the opposite way the direction of the clutch's rotation can be changed.



Installation example 3

MZEU-K SERIES CAM CLUTCH



- ① Inner race
- ② Outer race
- ③ Cam
- ④ Spring
- ⑤ Bearing
- ⑥ Side plate
- ⑦ E3 Torque arm
- ⑧ E4 Cover
- ⑨ Pin
- ⑩ Set screw
- ⑪ Hollow hex bolt
- ⑫ Set screw

E3 Torque Arm + E4 Cover

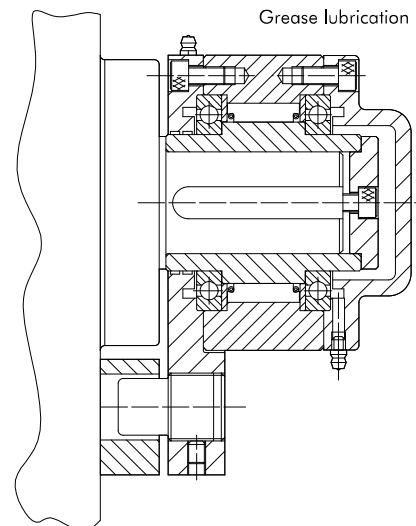
Dimensions in mm

Model	Bore Size H7	Inner Race Keyway	A	Ac	B h7	F	J	M _i	Q	R	S	T	U	Approx. Mass kg/pc
MZEU12-K E3+E4	12	4 x 1.8	42	53	62	20	0.8	13.5	44	59	10	10	6	1.0
MZEU15-K E3+E4	15	5 x 2.3	52	68	68	25	0.8	13.5	47	62	10	10	10	1.5
MZEU20-K E3+E4	20	6 x 2.8	57	73	75	30	0.8	15.0	54	72	12	11	10	2.0
MZEU25-K E3+E4	25	8 x 3.3	60	76	90	40	0.8	19.0	62	84	16	14	10	2.9
MZEU30-K E3+E4	30	8 x 3.3	68	84	100	45	1.0	19.0	68	92	16	14	10	4.3
MZEU35-K E3+E4	35	10 x 3.3	74	92	110	50	1.0	22.0	76	102	20	18	12	5.3
MZEU40-K E3+E4	40	12 x 3.3	86	105	125	55	1.3	22.0	85	112	20	18	12	7.8
MZEU45-K E3+E4	45	14 x 3.8	86	108	130	60	1.3	25.0	90	120	25	22	15	9.6
MZEU50-K E3+E4	50	14 x 3.8	94	113	150	70	1.3	25.0	102	135	25	22	12	12.1
MZEU55-K E3+E4	55	16 x 4.3	104	126	160	75	1.5	30.0	108	142	32	25	15	15.2
MZEU60-K E3+E4	60	18 x 4.4	114	137	170	80	1.5	30.0	112	145	32	25	15	17.7
MZEU70-K E3+E4	70	20 x 4.9	134	164.5	190	90	1.8	35.0	135	175	38	30	22.5	26.5
MZEU80-K E3+E4	80	22 x 5.4	144	168	210	105	1.8	35.0	145	185	38	30	16	33.6
MZEU90-K E3+E4	90	25 x 5.4	158	192	230	120	2.0	45.0	155	205	50	40	27	39.0
MZEU100-K E3+E4	100	28 x 6.4	182	217	270	140	2.0	45.0	180	230	50	40	28	67.4
MZEU130-K E3+E4	130	32 x 7.4	212	250	310	160	2.5	60.0	205	268	68	55	30	100.2
MZEU150-K E3+E4	150	36 x 8.4	246	286	400	200	2.5	60.0	255	325	68	55	32	194.8

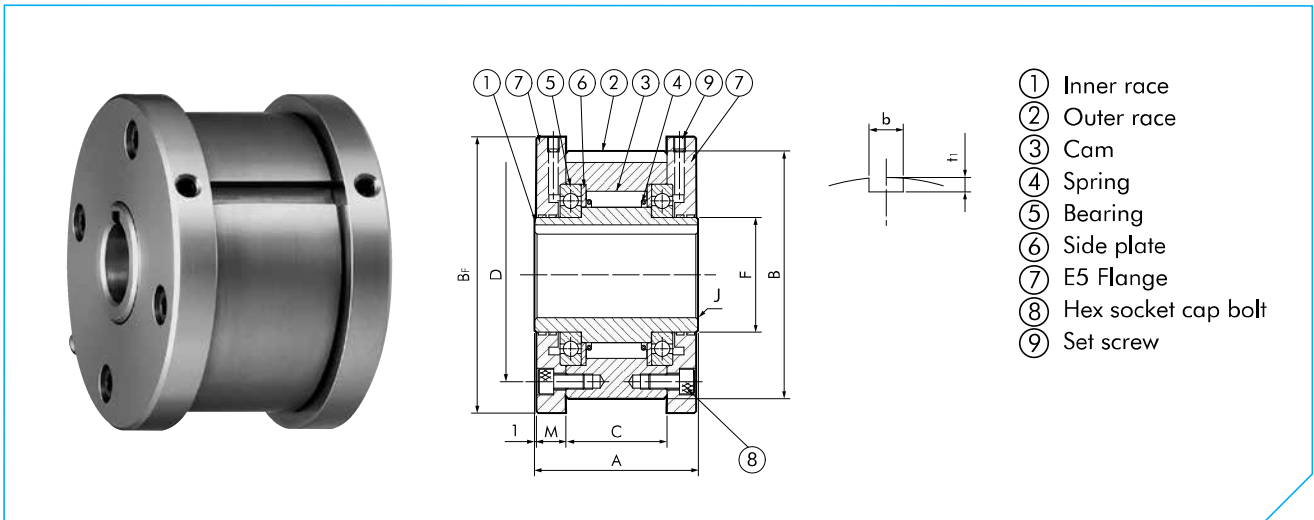
Installation and Usage

- This version of the MZEU-K Cam Clutch comes as a combination of a basic type clutch, an E3 torque arm and an E4 cover, each one packed and supplied as an individual part set. Each part set is delivered with a flange kit consisting of bolts, grease nipple, locker set screw and seal plug. The E3 kit comes with a an extra pin and set screw.
- Check the direction of rotation before assembling, then mount both flanges making use of the flange kit.
- Before mounting the sizes MZEU90-K to MZEU150-K apply the sealing adhesive, included with the part sets, between body (outer race surface) and the optional part, to prevent leakage of oil during operation.
- For the sizes MZEU12-K up to MZEU80-K assemble the shaft end plate onto the shaft before closing with the E4 cover. Refer to installation example 4.
- Before mounting the E4 cover on Model MZEU90-K up to MZEU150-K, packing should be fitted between the end surface of the inner race and the surface of the end plate, using sealing, washer and bolt(s). Refer to installation example 4.
- When installing the optional parts in the opposite way the direction of the clutch's rotation can be changed.

Installation example 4



MZEU-K SERIES CAM CLUTCH



E5 Flange + E5 Flange

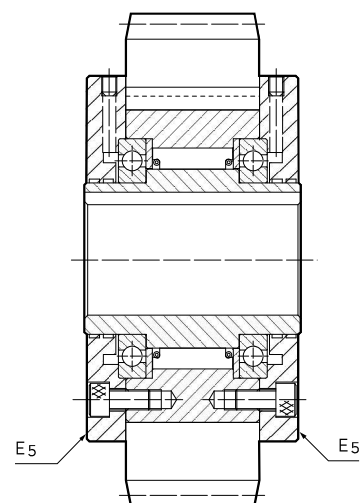
Dimensions in mm

Model	Bore Size H7	Inner Race Keyway	A	B h7	Bf	C	D	F	J	M	Outer Race Keyway		Approx. Mass kg/pc
											b P10	f1	
MZEU12-K E5+E5	12	4 x 1.8	42	62	70	20	51	20	0.8	10.0	4 x 2.5	0.5	
MZEU15-K E5+E5	15	5 x 2.3	52	68	76	28	56	25	0.8	11.0	5 x 3.0	0.8	
MZEU20-K E5+E5	20	6 x 2.8	57	75	84	34	64	30	0.8	10.5	6 x 3.5	1.2	
MZEU25-K E5+E5	25	8 x 3.3	60	90	99	35	78	40	0.8	11.5	8 x 4.0	1.8	
MZEU30-K E5+E5	30	8 x 3.3	68	100	109	43	87	45	1.0	11.5	8 x 4.0	2.6	
MZEU35-K E5+E5	35	10 x 3.3	74	110	119	45	96	50	1.0	13.5	10 x 5.0	3.2	
MZEU40-K E5+E5	40	12 x 3.3	86	125	135	53	108	55	1.3	15.5	12 x 5.0	4.8	
MZEU45-K E5+E5	45	14 x 3.8	86	130	140	53	112	60	1.3	15.5	14 x 5.5	6.2	
MZEU50-K E5+E5	50	14 x 3.8	94	150	160	64	132	70	1.3	14.0	14 x 5.5	8.2	
MZEU55-K E5+E5	55	16 x 4.3	104	160	170	66	138	75	1.5	18.0	16 x 6.0	9.5	
MZEU60-K E5+E5	60	18 x 4.4	114	170	182	78	150	80	1.5	17.0	18 x 7.0	12.3	
MZEU70-K E5+E5	70	20 x 4.9	134	190	202	95	165	90	1.8	18.5	20 x 7.5	18.1	
MZEU80-K E5+E5	80	22 x 5.4	144	210	222	100	185	105	1.8	21.0	22 x 9.0	23.1	
MZEU90-K E5+E5*	90	25 x 5.4	158	230	242	115	206	120	2.0	20.5	25 x 9.0	28.1	
MZEU100-K E5+E5*	100	28 x 6.4	182	270	282	120	240	140	2.0	30.0	28 x 10.0	46.3	
MZEU130-K E5+E5*	130	32 x 7.4	212	310	322	152	278	160	2.5	29.0	32 x 11.0	70.2	
MZEU150-K E5+E5*	150	36 x 8.4	246	400	412	180	360	200	2.5	32.0	36 x 12.0	146.3	

* = Non-stock item

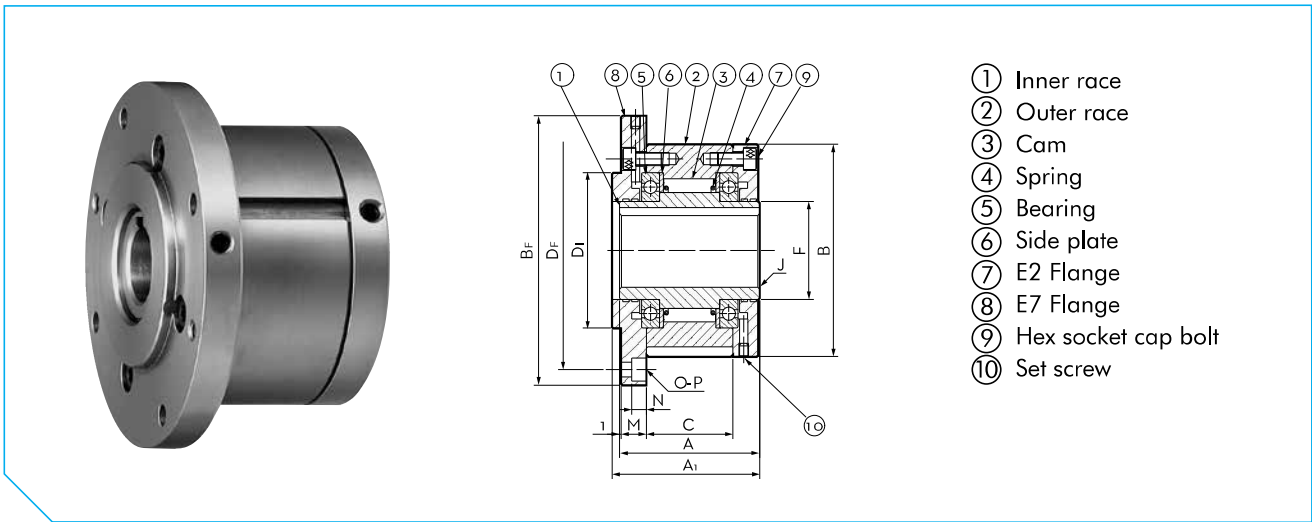
Installation and Usage

1. This version of the MZEU-K Cam Clutch comes as a combination of a basic type clutch, and two E5 flanges, each one packed and supplied as an individual part set. Each part set comes with a complete flange kit, containing a number of bolts, a grease nipple, a locker set screw and a seal plug.
2. Check the direction of rotation before assembling, then mount both flanges making use of the flange kit.
3. Before mounting the sizes MZEU90-K to MZEU150-K apply the sealing adhesive, which comes along with the part sets, between body (outer race surface) and the optional part, to prevent leakage of oil during operation.
4. Insert the Cam Clutch into the appropriate unit (gear, sprocket, pulley etc.). We recommend a tolerance of H7 for the bore size. Fix the key and close the unit with the second E5 flange, making use of the flange kit.
5. MZEU-K clutches with E5 and E5 flanges can be used in both rotation directions.
6. For high speed indexing applications (over 50 cycle/min) strong springs are recommended and can be supplied accordingly.



Installation example 5

MZEU-K SERIES CAM CLUTCH



- ① Inner race
- ② Outer race
- ③ Cam
- ④ Spring
- ⑤ Bearing
- ⑥ Side plate
- ⑦ E2 Flange
- ⑧ E7 Flange
- ⑨ Hex socket cap bolt
- ⑩ Set screw

E2 Flange + E7 Flange

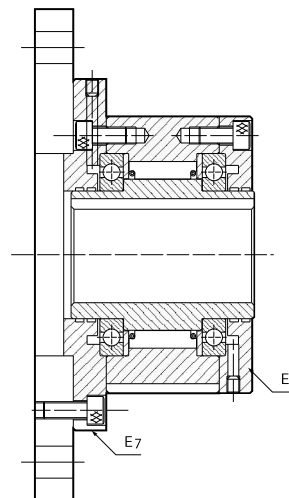
Dimensions in mm

Model	Bore Size H7	Inner Race Keyway	A	A1	B h7	BF	C	D1 h7	DF	F	J	M	N	O-P	Approx. Mass kg/pc
MZEU12-K E2+E7	12	4 x 1.8	42	44	62	85	20	42	72	20	0.8	10.0	5.7	3 - ø5.5	0.5
MZEU15-K E2+E7	15	5 x 2.3	52	54	68	92	28	47	78	25	0.8	11.0	5.7	3 - ø5.5	0.8
MZEU20-K E2+E7	20	6 x 2.8	57	59	75	98	34	55	85	30	0.8	10.5	5.7	4 - ø5.5	1.2
MZEU25-K E2+E7	25	8 x 3.3	60	62	90	118	35	68	104	40	0.8	11.5	6.8	4 - ø6.6	1.8
MZEU30-K E2+E7	30	8 x 3.3	68	70	100	128	43	75	114	45	1.0	11.5	6.8	6 - ø6.6	2.6
MZEU35-K E2+E7	35	10 x 3.3	74	76	110	140	45	80	124	50	1.0	13.0	6.8	6 - ø6.6	3.2
MZEU40-K E2+E7	40	12 x 3.3	86	88	125	160	53	90	142	55	1.3	15.0	9.0	6 - ø9.0	4.8
MZEU45-K E2+E7	45	14 x 3.8	86	88	130	165	53	95	146	60	1.3	15.0	9.0	8 - ø9.0	6.2
MZEU50-K E2+E7	50	14 x 3.8	94	96	150	185	64	110	166	70	1.3	13.0	9.0	8 - ø9.0	8.2
MZEU55-K E2+E7	55	16 x 4.3	104	106	160	204	66	115	182	75	1.5	17.0	11.0	8 - ø11.0	9.5
MZEU60-K E2+E7	60	18 x 4.4	114	116	170	214	78	125	192	80	1.5	16.0	11.0	10 - ø11.0	12.3
MZEU70-K E2+E7	70	20 x 4.9	134	136	190	234	95	140	212	90	1.8	17.5	11.0	10 - ø11.0	18.1
MZEU80-K E2+E7	80	22 x 5.4	144	146	210	254	100	160	232	105	1.8	20.0	11.0	10 - ø11.0	23.1
MZEU90-K E2+E7*	90	25 x 5.4	158	160	230	278	115	180	254	120	2.0	19.0	13.0	10 - ø14.0	28.1
MZEU100-K E2+E7*	100	28 x 6.4	182	184	270	335	120	210	305	140	2.0	28.0	17.5	10 - ø18.0	46.3
MZEU130-K E2+E7*	130	32 x 7.4	212	214	310	380	152	240	345	160	2.5	27.0	17.5	12 - ø18.0	70.2
MZEU150-K E2+E7*	150	36 x 8.4	246	248	400	485	180	310	445	200	2.5	30.0	21.5	12 - ø22.0	146.3

* = Non-stock item

Installation and Usage

1. This version of the MZEU-K Cam Clutch comes as a combination of a basic type clutch, an E2 flange and an E7 flange, each one packed and supplied as an individual part set.
2. Each flange set come with a complete mounting kit, containing a number of bolts, a grease nipple, a locker set screw and a seal plug.
3. Check the direction of rotation before assembling, then mount both flanges making use of the flange kit.
4. Before mounting the sizes MZEU90-K to MZEU150-K apply the sealing adhesive, which comes along with the part sets, between body (outer race surface) and the optional part, to prevent leakage of oil during operation.
5. Always use bolts for installing a sprocket, a gear, pulley or other options to the clutch. Size and quantity of the bolts needed are mentioned under H-L on page 17. Length and shape of the bolts is determined by the thickness of the fitted part.
6. When installing any type of optional or fitted part in the opposite way the direction of the clutch's rotation can be changed.
7. For high speed indexing applications (over 50 cycle/min) strong springs are recommended and can be supplied accordingly.



Installation example 6

Note:

Do not apply a large overhung load to the outer race by using E7 flange to keep the centerline between the inner and outer race.